



**CollegeBoard**

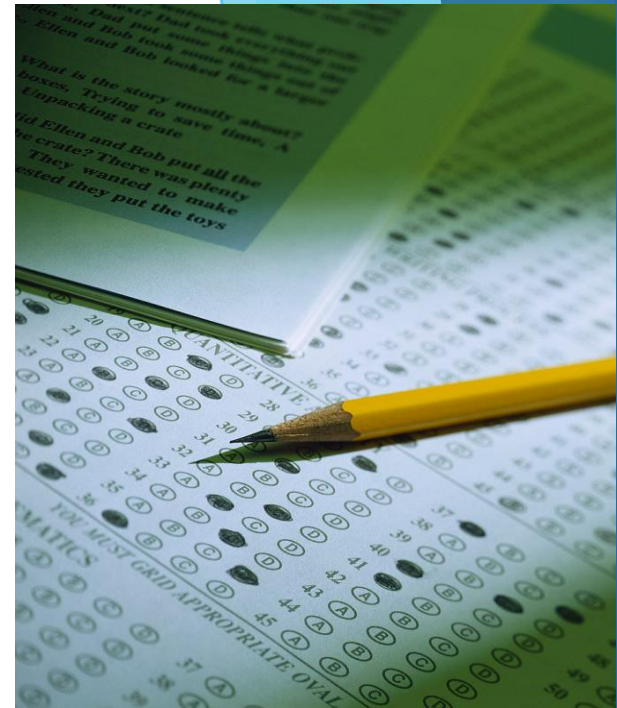
**PSAT/NMSQT**

**10<sup>th</sup> Grade Advisement**

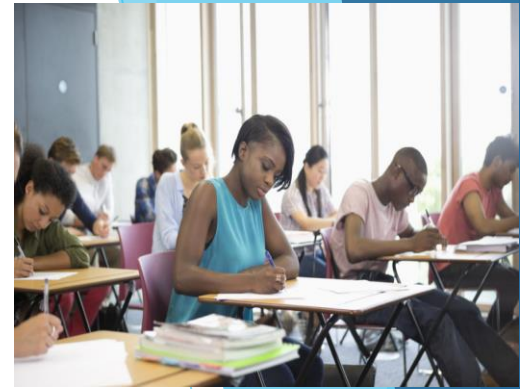


# What is the PSAT?

- ▶ The Preliminary SAT/National Merit Scholarship Qualifying Test (PSAT/NMSQT)
- ▶ Measures critical reading skills
- ▶ Math problem-solving skills
- ▶ Writing skills



# Why take the PSAT?



- ▶ The PSAT uses similar questions found on the SAT Reasoning test; therefore, it is good preparation.
- ▶ Predict SAT scores.
- ▶ Receive feedback on skill strengths and weaknesses and individualized assistance via Khan Academy including customized practice.
- ▶ In 11<sup>th</sup> grade enter competition for scholarships (National Merit Scholarship )



# What does the PSAT measure?

- ▶ Math reasoning, critical reading, and writing skills necessary for academic success in college.
- ▶ Knowledge and skills developed through years of study in different courses.
- ▶ Ability to reason with facts and concepts.

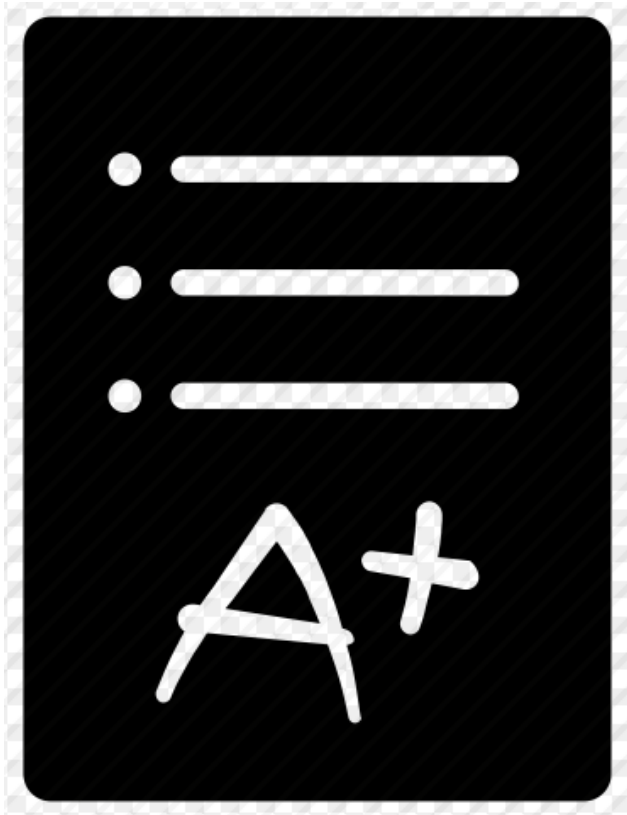


# PSAT Scoring

- ▶ Total Scores: 320 – 1520 .
- ▶ Section Scores for Reading/Writing and Math : 160 – 760.
- ▶ Ranges for Test Scores for Reading, Writing and Language and Math: 8-38.
- ▶ Cross Test Scores for Analysis of History/Social Studies and Analysis of Science: 8-38.



# PSAT Scoring Continued



- ▶ Correct answer equals one point.
- ▶ Omitted question equals zero points.
- ▶ There is no penalty for guessing. Take your best guess, but don't leave unanswered questions.



# PSAT Content

- ▶ Reading Section - 60 minutes with 47 multiple choice questions.
- ▶ Writing and Language Section - 35 minutes with 44 questions.
- ▶ Math section - 70 minutes with 40 multiple-choice questions and 8 student-produced response questions



# PSAT Reading Section

- ▶ All Reading Test questions are multiple choice and based on passages.
- ▶ Some passages are paired with other passages or informational graphics, such as charts, graphs, and tables.
- ▶ No mathematical computation is required.
- ▶ Prior topic-specific knowledge is never tested.





# Reading Section Continued

- ▶ Questions will test students on analysis in history/social studies and analysis in science. Students may need to analyze passages and graphics.
- ▶ Science passages may be paired with questions focused on hypotheses, experimentation, and data.
- ▶ Literature passages may be paired with questions focused on theme, mood, and characterization.
- ▶ Some questions will test how well students understand words in context.



# Reading Section Continued

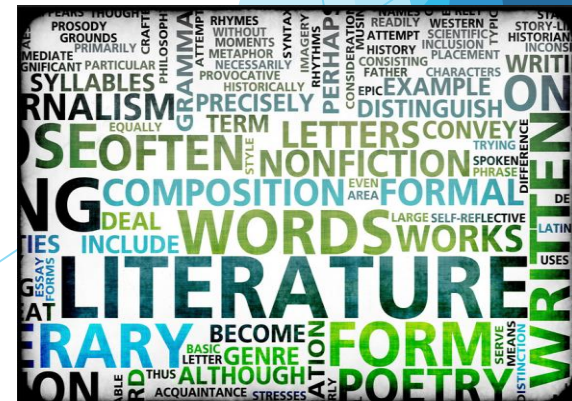
The Reading Test will assess command of evidence:

- ▶ The use of evidence: Students will need to find the evidence in a passage that best supports the answer to a previous question or that serves as the basis for a reasonable conclusion.
- ▶ The analysis of an argument: Students will need to identify the way authors use evidence to support their claims.
- ▶ The analysis of quantitative information: Students will need to examine informational graphics and relate the information conveyed by them to the information and ideas conveyed through words.



# PSAT Writing and Language

- ▶ The Writing and Language Test puts students in the role of an editor improving a written passage. Most questions ask students to decide which, if any, of the three alternatives to an underlined part of a passage most improves it.
- ▶ All Writing and Language Test questions are multiple choice and based on passages.
- ▶ Some passages are paired with informational graphics such as charts, graphs, and tables.
- ▶ Prior topic-specific knowledge is never tested.
- ▶ No mathematical computation is required.



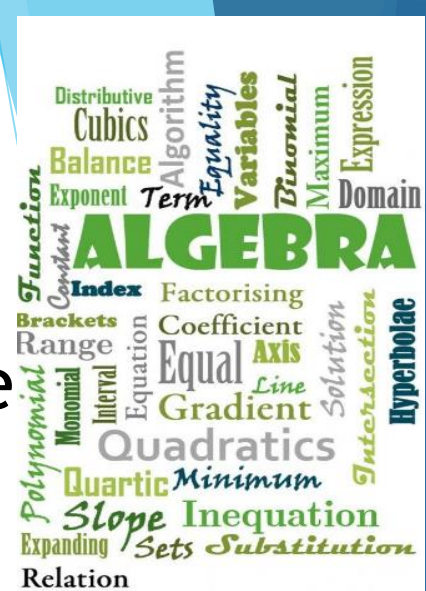
# Writing and Language Continued



- ▶ Questions support an emphasis on analysis in history/social studies passages, and interpretation of words in context and command of evidence in science passages.
- ▶ Some questions will test students on the expression of ideas: Students improve topic development, organization, and rhetorical effectiveness.
- ▶ Some questions test students on their understanding of standard English conventions. Students edit text so that words, phrases, sentences, and punctuation are used appropriately and consistent with the practices of standard written English.
- ▶ Some questions assess how well students understand words in context. Students improve passages by using words carefully and with purpose.
- ▶ Students' command of evidence is also assessed by some questions. These questions assess how well students revise a passage to improve the way it develops information and ideas.

# PSAT Math Section

- ▶ Most math questions will be multiple choice, but some will be student-produced responses (grid-ins).
- ▶ The Math Test is divided into two portions: Math Test - Calculator and Math Test - No Calculator.
- ▶ Some parts of the test present students with a scenario and then ask several questions about it.



# Math Section Continued



The Math Test is characterized by questions that:

- ▶ Test mathematical reasoning reflecting the work students are doing in classrooms across the country.
- ▶ Emphasize fluency and understanding.
- ▶ Ask students to solve problems grounded in science, social science, career scenarios, and other real-life contexts.
- ▶ The test covers all math practices, with an emphasis on problem solving, modeling, using appropriate tools strategically, and recognizing and using algebraic structure.

# Math Section Continued



## Student-Produced Response Questions

- ▶ 17-22 percent, depending on the assessment – are student-produced response questions (grid-ins). Instead of multiple choice, students are required to solve problems and enter their answers in the grids.
- ▶ Sometimes students will answer several questions about the same scenario, allowing them to dig in to a situation and model it mathematically. These multistep applications reflect the complexity of real-life problem solving in science, social science, and career contexts.

# PSAT Test Taking Tips



- ▶ Take the practice test on College board to be familiar with the types of test items.
- ▶ Get plenty of rest the night before.
- ▶ Eat a good breakfast.
- ▶ Bring a good attitude to the test.
- ▶ Skip items which are hard and come back to them last, but don't leave any blank.
- ▶ Bring an approved calculator. NPHS cannot provide calculators to every student.
- ▶ Bring 2 number 2 pencils (not mechanical)